

\$389,900 - 104 21 Summerwood Drive, Sherwood Park

MLS® #E4461385

\$389,900

3 Bedroom, 2.50 Bathroom, 1,459 sqft

Condo / Townhouse on 0.00 Acres

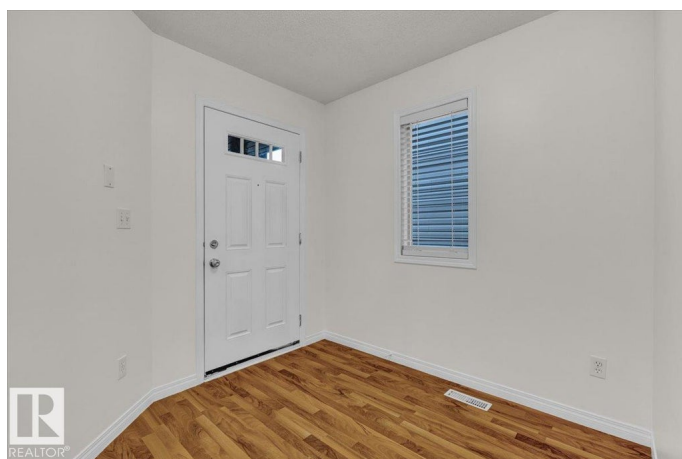
Summerwood, Sherwood Park, AB

This beautifully refreshed half duplex is move-in ready with upgrades completed in Sept 2025: fresh paint, new carpet, window coverings, commode, updated light fixtures, polished floors, new smoke alarm, cleaned furnace & fireplace, and updated door/drawer tracks. Step inside to a bright open-concept main floor with a spacious foyer, cozy living room featuring a corner gas fireplace, corner pantry, and dining area that opens to the patio. A 2-piece bath completes the main floor. Upstairs offers 3 bedrooms, 2 full baths, and a den. The primary suite has its own 4-piece ensuite. The unfinished basement is full of potential, ready for your personal touch. There is a second fridge in the basement. Outside, enjoy the patio, fenced yard, and double attached garage. Ample visitor parking. With fresh updates and a functional layout in a great location, this home is truly a must-see!

Built in 2007

Essential Information

MLS® #	E4461385
Price	\$389,900
Bedrooms	3
Bathrooms	2.50
Full Baths	2
Half Baths	1



Square Footage	1,459
Acres	0.00
Year Built	2007
Type	Condo / Townhouse
Sub-Type	Half Duplex
Style	2 Storey
Status	Active

Community Information

Address	104 21 Summerwood Drive
Area	Sherwood Park
Subdivision	Summerwood
City	Sherwood Park
County	ALBERTA
Province	AB
Postal Code	T8H 0B4

Amenities

Amenities	Deck, Parking-Visitor
Parking	Double Garage Detached

Interior

Interior Features	ensuite bathroom
Appliances	Dishwasher-Built-In, Dryer, Garage Opener, Microwave Hood Fan, Stove-Electric, Washer, Window Coverings, Refrigerators-Two, Oven Built-In-Two
Heating	Forced Air-1, Natural Gas
Fireplace	Yes
Fireplaces	Glass Door
Stories	2
Has Basement	Yes
Basement	Full, Unfinished

Exterior

Exterior	Wood, Vinyl
Exterior Features	Backs Onto Park/Trees, Landscaped, Low Maintenance Landscape, No Back Lane, Playground Nearby, Schools, Shopping Nearby, See Remarks
Roof	Asphalt Shingles

Construction	Wood, Vinyl
Foundation	Concrete Perimeter

Additional Information

Date Listed	October 8th, 2025
Days on Market	1
Zoning	Zone 25
Condo Fee	\$360

DATA IS DEEMED RELIABLE BUT IS NOT GUARANTEED ACCURATE BY THE REALTORS® ASSOCIATION OF EDMONTON. COPYRIGHT 2025 BY THE REALTORS® ASSOCIATION OF EDMONTON. ALL RIGHTS RESERVED.Trademarks are owned or controlled by the Canadian Real Estate Association (CREA) and identify real estate professionals who are members of CREA (REALTOR®, REALTORS®) and/or the quality of services they provide (MLS®, Multiple Listing Service®)

Listing information last updated on October 9th, 2025 at 3:32am MDT