

Courtesy Of Fred Clemens Of ComFree

\$429,900 - 8415 156 Avenue, Edmonton

MLS® #E4453983

\$429,900

5 Bedroom, 3.00 Bathroom, 1,334 sqft
Single Family on 0.00 Acres

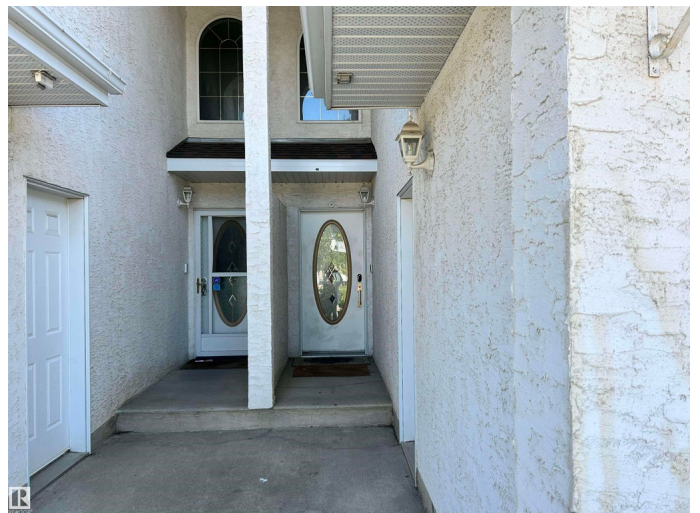
Belle Rive, Edmonton, AB

Fantastic home in the friendly neighborhood of Belle Rive. This rare half duplex with 2,167 sqft of living space featuring a total of 5 bedrooms & 3 full baths. Main floor features SS appliances, maple cabinetry & matching hardwood flooring. Raised breakfast bar & corner pantry. Spacious living room & dining room area offers tons of sunlight with large windows and a door leading to a landscaped backyard with composite low-maintenance deck. Master bedroom with 3pc ensuite completes main floor, and just a few steps up is another 3pc bath and 2 additional bedrooms perfect for a growing family. Basement is completely finished with grand family room with fireplace, 2 additional bedrooms, another 3pc washroom, and laundry room. There have been major upgrades in the past 2 years: almost the entire house has been renovated—new roof, granite countertop, new sink, quartz vanity top, new hardwood, new washer, new furnace, new hot water tank.

Built in 2000

Essential Information

MLS® #	E4453983
Price	\$429,900
Bedrooms	5
Bathrooms	3.00



Full Baths	3
Square Footage	1,334
Acres	0.00
Year Built	2000
Type	Single Family
Sub-Type	Half Duplex
Style	Bi-Level
Status	Active

Community Information

Address	8415 156 Avenue
Area	Edmonton
Subdivision	Belle Rive
City	Edmonton
County	ALBERTA
Province	AB
Postal Code	T5Z 3B4

Amenities

Amenities	Deck, Detectors Smoke, Hot Wtr Tank-Energy Star, No Smoking Home, Vaulted Ceiling
Parking	Double Garage Attached

Interior

Interior Features	ensuite bathroom
Appliances	Dishwasher-Built-In, Dryer, Hood Fan, Oven-Microwave, Refrigerator, Stove-Countertop Electric, Stove-Electric, Washer, Window Coverings
Heating	Forced Air-1, Natural Gas
Fireplace	Yes
Fireplaces	Corner, Oak Surround
Stories	2
Has Basement	Yes
Basement	Full, Finished

Exterior

Exterior	Wood, Stucco
Exterior Features	Fenced, Landscaped, Low Maintenance Landscape, Playground Nearby, Public Swimming Pool, Public Transportation, Schools, Shopping Nearby

Roof	Asphalt Shingles
Construction	Wood, Stucco
Foundation	Concrete Perimeter

Additional Information

Date Listed August 21st, 2025

Days on Market 2

Zoning Zone 28

DATA IS DEEMED RELIABLE BUT IS NOT GUARANTEED ACCURATE BY THE REALTORS® ASSOCIATION OF EDMONTON. COPYRIGHT 2025 BY THE REALTORS® ASSOCIATION OF EDMONTON. ALL RIGHTS RESERVED. Trademarks are owned or controlled by the Canadian Real Estate Association (CREA) and identify real estate professionals who are members of CREA (REALTOR®, REALTORS®) and/or the quality of services they provide (MLS®, Multiple Listing Service®)

Listing information last updated on August 23rd, 2025 at 11:32am MDT