

## \$210,000 - 429 16807 100 Avenue, Edmonton

MLS® #E4451316

**\$210,000**

2 Bedroom, 2.00 Bathroom, 858 sqft

Condo / Townhouse on 0.00 Acres

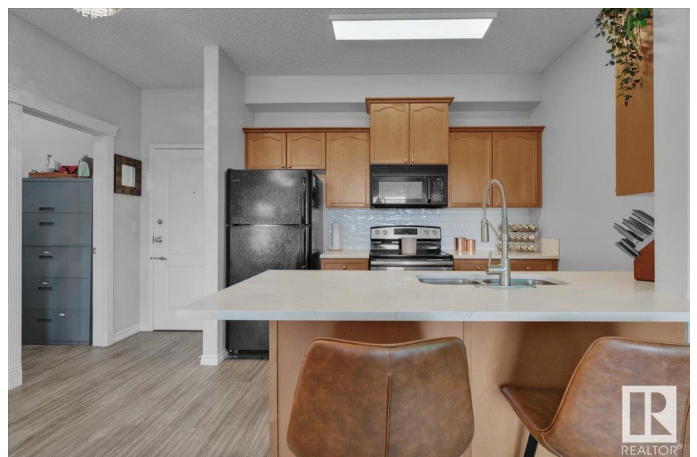
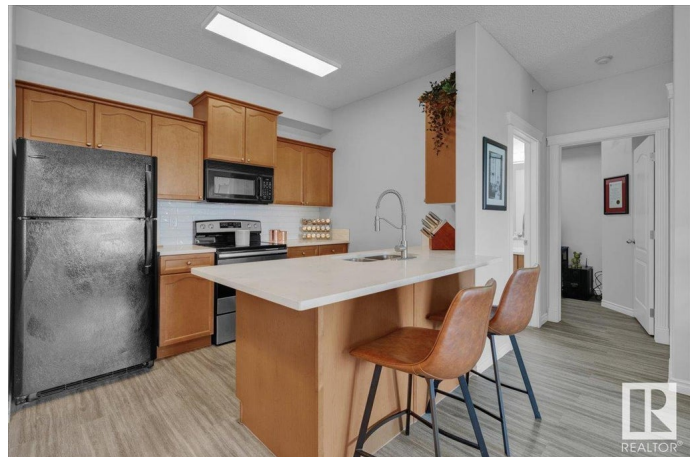
Glenwood (Edmonton), Edmonton, AB

RENOVATED TOP FLOOR UNIT WITH A PARK VIEW & 3 PARKING STALLS! Within walking distance to restaurants, shops, transit & more. You can't beat this location. This sunny, top-floor 2 bed + den, 2 bath condo faces Jack Horan Park and features soaring ceilings, large windows & new flooring. The updated kitchen has quartz countertops, subway tile backsplash & a modern sink/faucet. The open-concept floor plan connects kitchen, dining & living. Perfect for entertaining! The spacious primary bedroom fits a king, with a walk-through closet & 3pc ensuite. The second bedroom is across the unit near the 4pc main bath. Ideal for roommates or guests. The den makes a great office or extra storage room. Additional upgrades include fresh paint, new toilets, updated lights, in-suite laundry, a large balcony, one titled underground stall + a titled tandem stall. 3 PARKING STALLS TOTAL!

Built in 2004

### Essential Information

MLS® #	E4451316
Price	\$210,000
Bedrooms	2
Bathrooms	2.00
Full Baths	2



Square Footage	858
Acres	0.00
Year Built	2004
Type	Condo / Townhouse
Sub-Type	Lowrise Apartment
Style	Single Level Apartment
Status	Active

### Community Information

Address	429 16807 100 Avenue
Area	Edmonton
Subdivision	Glenwood (Edmonton)
City	Edmonton
County	ALBERTA
Province	AB
Postal Code	T5P 4Z6

### Amenities

Amenities	Ceiling 9 ft., Parking-Visitor, Storage-In-Suite
Parking Spaces	3
Parking	2 Outdoor Stalls, Heated, Parkade, Underground

### Interior

Interior Features	ensuite bathroom
Appliances	Dishwasher-Built-In, Microwave Hood Fan, Refrigerator, Stacked Washer/Dryer, Stove-Electric, Window Coverings
Heating	Forced Air-1, Natural Gas
# of Stories	4
Stories	1
Has Basement	Yes
Basement	None, No Basement

### Exterior

Exterior	Wood, Vinyl
Exterior Features	Public Swimming Pool, Public Transportation, Schools, Shopping Nearby
Roof	Asphalt Shingles
Construction	Wood, Vinyl
Foundation	Concrete Perimeter

**Additional Information**

Date Listed	August 5th, 2025
Days on Market	2
Zoning	Zone 22
Condo Fee	\$503

DATA IS DEEMED RELIABLE BUT IS NOT GUARANTEED ACCURATE BY THE REALTORS® ASSOCIATION OF EDMONTON. COPYRIGHT 2025 BY THE REALTORS® ASSOCIATION OF EDMONTON. ALL RIGHTS RESERVED.Trademarks are owned or controlled by the Canadian Real Estate Association (CREA) and identify real estate professionals who are members of CREA (REALTOR®, REALTORS®) and/or the quality of services they provide (MLS®, Multiple Listing Service®)

Listing information last updated on August 7th, 2025 at 5:32pm MDT