

Courtesy Of David Lofthaug Of Bode

## \$398,895 - 310 Hawthorn Way, Leduc

MLS® #E4448886

**\$398,895**

3 Bedroom, 2.50 Bathroom, 1,383 sqft

Single Family on 0.00 Acres

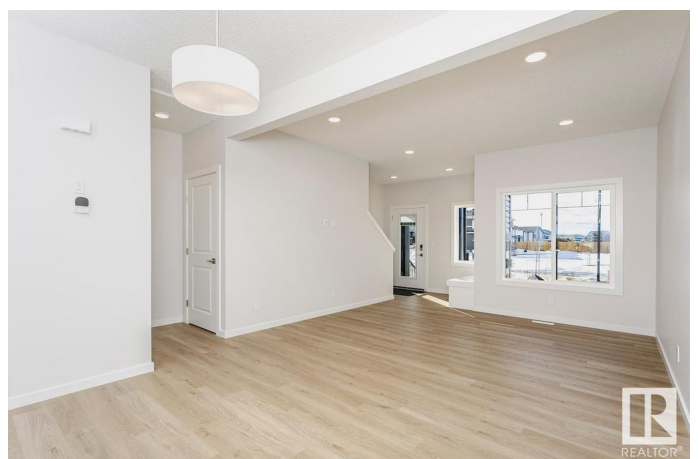
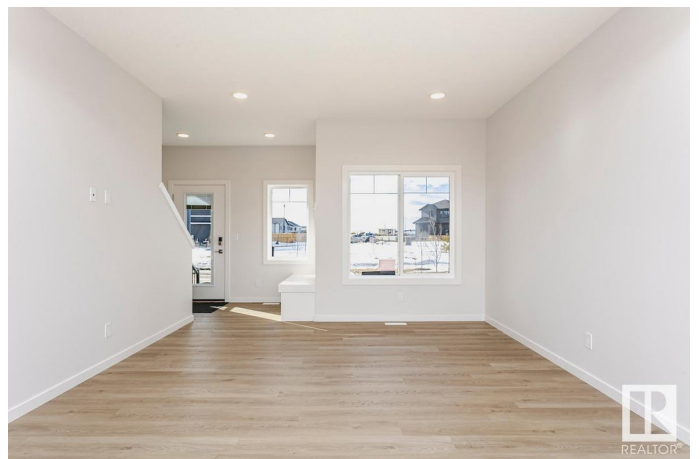
Woodbend, Leduc, AB

New built townhome by reputable builder. No Condo Fees! Open concept, 9â€™™ ceilings, with oversized windows that provide plenty of natural light. Contemporary finishes include soft-close cabinetry with 41â€• uppers, quartz countertops, and luxury vinyl plank flooring. MDF Bench with hooks at the front entrance. Laundry room conveniently located on the second level. Rear detached double garage with a concrete driveway provides parking for 4 vehicles. Includes smart home technology system (Smart Home Hub), Ecobee thermostat, video doorbell & Weiser Wi-Fi Smart keyless lock with touch screen. Upgraded Panel, Box, & Breaker to 200 Amp Service.

Built in 2025

### Essential Information

MLS® #	E4448886
Price	\$398,895
Bedrooms	3
Bathrooms	2.50
Full Baths	2
Half Baths	1
Square Footage	1,383
Acres	0.00
Year Built	2025



Type	Single Family
Sub-Type	Residential Attached
Style	2 Storey
Status	Active

### **Community Information**

Address	310 Hawthorn Way
Area	Leduc
Subdivision	Woodbend
City	Leduc
County	ALBERTA
Province	AB
Postal Code	T9E 0B1

### **Amenities**

Amenities	Ceiling 9 ft., No Animal Home, No Smoking Home, See Remarks
Parking Spaces	4
Parking	Double Garage Detached

### **Interior**

Interior Features	ensuite bathroom
Appliances	None
Heating	Forced Air-1, Natural Gas
Stories	2
Has Basement	Yes
Basement	Full, Unfinished

### **Exterior**

Exterior	Wood, Vinyl
Exterior Features	Airport Nearby, Golf Nearby, Park/Reserve, Playground Nearby, Public Swimming Pool, Public Transportation, Schools, Shopping Nearby
Roof	Asphalt Shingles
Construction	Wood, Vinyl
Foundation	Concrete Perimeter

### **Additional Information**

Date Listed	July 21st, 2025
Days on Market	82
Zoning	Zone 81

DATA IS DEEMED RELIABLE BUT IS NOT GUARANTEED ACCURATE BY THE REALTORS® ASSOCIATION OF EDMONTON. COPYRIGHT 2025 BY THE REALTORS® ASSOCIATION OF EDMONTON. ALL RIGHTS RESERVED. Trademarks are owned or controlled by the Canadian Real Estate Association (CREA) and identify real estate professionals who are members of CREA (REALTOR®, REALTORS®) and/or the quality of services they provide (MLS®, Multiple Listing Service®)

Listing information last updated on October 11th, 2025 at 3:02am MDT