

Courtesy Of Moe Teliani Of Sable Realty

\$935,000 - 10416 Glenora Crescent, Edmonton

MLS® #E4448198

\$935,000

5 Bedroom, 2.50 Bathroom, 2,867 sqft
Single Family on 0.00 Acres

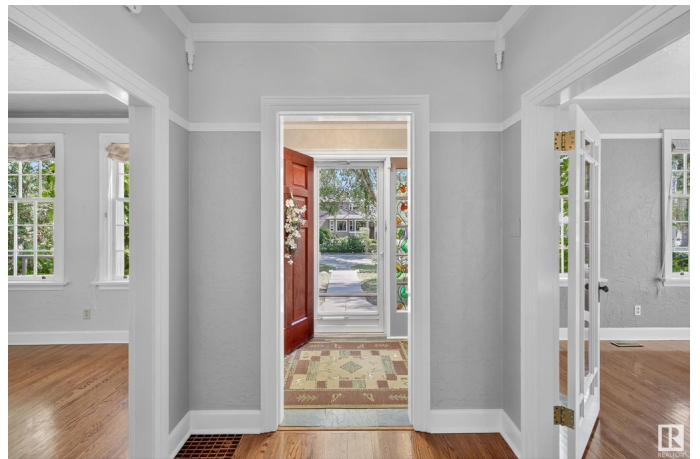
Glenora, Edmonton, AB

Welcome to this distinguished 2.5-storey home in prestigious Old Glenora - one of Edmonton's most sought-after and historically rich neighbourhoods - offering over 3,000 sq.ft. of living space. With 5 bedrooms and 2.5 baths, this home has been lovingly cared for by the same family since 1958 and is listed on the City's Inventory of Historic Homes, this property defines classic elegance. Inside, a grand foyer opens to a formal dining room, spacious living room with original (converted to gas) fireplace, and a main floor sunroom. The bay-window kitchen nook is perfect for casual meals, while the main floor den offers ideal office space. Upstairs includes a huge primary suite with a dressing room and access to another sunroom, plus four more bedrooms across the second and third floors. Set on a private lot with no adjacent neighbours, the home features a fenced yard, RV parking, and a 24x26 garage with attic storage. Just steps to the future LRT, Ramsey Ravine, schools, trails, and minutes to downtown.

Built in 1933

Essential Information

MLS® #	E4448198
Price	\$935,000



Bedrooms	5
Bathrooms	2.50
Full Baths	2
Half Baths	1
Square Footage	2,867
Acres	0.00
Year Built	1933
Type	Single Family
Sub-Type	Detached Single Family
Style	2 and Half Storey
Status	Active

Community Information

Address	10416 Glenora Crescent
Area	Edmonton
Subdivision	Glenora
City	Edmonton
County	ALBERTA
Province	AB
Postal Code	T5N 3J7

Amenities

Amenities	Deck, No Smoking Home
Parking	Double Garage Detached, Over Sized, Rear Drive Access, RV Parking

Interior

Appliances	Air Conditioning-Central, See Remarks
Heating	Forced Air-1, Natural Gas
Stories	3
Has Basement	Yes
Basement	Full, Finished

Exterior

Exterior	Wood, Stucco
Exterior Features	Back Lane, Fenced, Landscaped, Paved Lane, Public Transportation
Roof	Asphalt Shingles
Construction	Wood, Stucco
Foundation	See Remarks

School Information

Elementary	Glenora
Middle	Westminster
High	Ross Shepard

Additional Information

Date Listed July 17th, 2025

Days on Market 91

Zoning Zone 11

DATA IS DEEMED RELIABLE BUT IS NOT GUARANTEED ACCURATE BY THE REALTORS® ASSOCIATION OF EDMONTON. COPYRIGHT 2025 BY THE REALTORS® ASSOCIATION OF EDMONTON. ALL RIGHTS RESERVED. Trademarks are owned or controlled by the Canadian Real Estate Association (CREA) and identify real estate professionals who are members of CREA (REALTOR®, REALTORS®) and/or the quality of services they provide (MLS®, Multiple Listing Service®)

Listing information last updated on October 16th, 2025 at 5:32pm MDT