

## **\$379,900 - 4 20 Augustine Crescent, Sherwood Park**

MLS® #E4448056

**\$379,900**

2 Bedroom, 2.50 Bathroom, 1,474 sqft

Condo / Townhouse on 0.00 Acres

Aspen Trails, Sherwood Park, AB

Located in the desirable community of Aspen Trails - With great restaurants, many shopping amenities, long walking trails, low maintenance, + community living. This is the place you can call home. With double garage on the main level, leading into a flex area providing multi usages, play room, office space, crafting room, TV area, the options are endless. The second floor contains the open concept living, dining + kitchen with powder room + access to the balcony to enjoy your morning coffee on those sunny summer days. Loads of space for entertaining guests complete with ample cupboard + counter space with eat up island. The upper level features 2 primary suites each with a 4 piece ensuite. One primary has spacious walk in closet while the second primary houses large corner closet. Here is an opportunity to make this home + enjoy all the wonders + excitement of living in Sherwood Park! Low condo fees of \$244.01.

Built in 2019

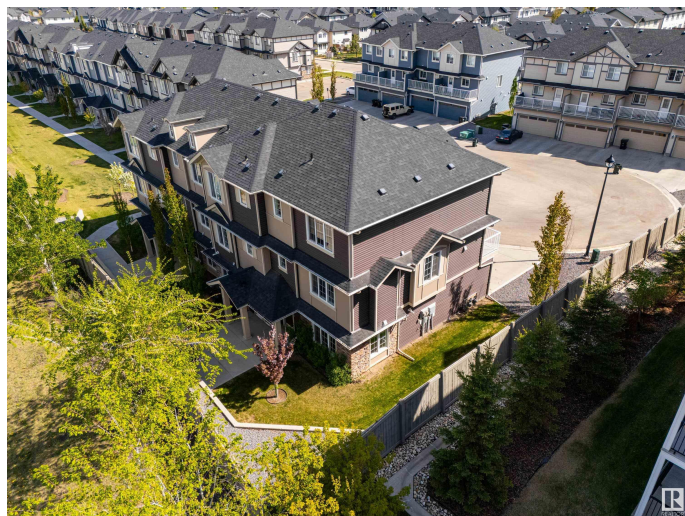
### **Essential Information**

MLS® # E4448056

Price \$379,900

Bedrooms 2

Bathrooms 2.50



Full Baths	2
Half Baths	1
Square Footage	1,474
Acres	0.00
Year Built	2019
Type	Condo / Townhouse
Sub-Type	Townhouse
Style	3 Storey
Status	Active

### Community Information

Address	4 20 Augustine Crescent
Area	Sherwood Park
Subdivision	Aspen Trails
City	Sherwood Park
County	ALBERTA
Province	AB
Postal Code	T8H 0Z8

### Amenities

Amenities	Detectors Smoke, Parking-Visitor
Parking Spaces	2
Parking	Double Garage Attached

### Interior

Interior Features	ensuite bathroom
Appliances	Dishwasher-Built-In, Dryer, Garage Control, Garage Opener, Microwave Hood Fan, Refrigerator, Stove-Electric, Washer
Heating	Forced Air-1, Natural Gas
Stories	3
Has Basement	Yes
Basement	None, No Basement

### Exterior

Exterior	Wood, Stone, Vinyl
Exterior Features	Flat Site, Golf Nearby, Landscaped, Playground Nearby, Public Transportation, Schools, Shopping Nearby
Roof	Asphalt Shingles
Construction	Wood, Stone, Vinyl

Foundation                      Concrete Perimeter

**Additional Information**

Date Listed                      July 16th, 2025  
Days on Market                2  
Zoning                              Zone 25  
Condo Fee                        \$244

DATA IS DEEMED RELIABLE BUT IS NOT GUARANTEED ACCURATE BY THE REALTORS® ASSOCIATION OF EDMONTON. COPYRIGHT 2025 BY THE REALTORS® ASSOCIATION OF EDMONTON. ALL RIGHTS RESERVED.Trademarks are owned or controlled by the Canadian Real Estate Association (CREA) and identify real estate professionals who are members of CREA (REALTOR®, REALTORS®) and/or the quality of services they provide (MLS®, Multiple Listing Service®)  
Listing information last updated on July 18th, 2025 at 4:32pm MDT