

# \$159,900 - 307 32 Alpine Place, St. Albert

MLS® #E4447221

**\$159,900**

2 Bedroom, 1.00 Bathroom, 851 sqft

Condo / Townhouse on 0.00 Acres

Akinsdale, St. Albert, AB

Top-Floor 2-Bedroom Condo, Stylish, Spacious & Move-In Ready! Beautifully updated condo boasting 850 sq ft of smartly designed living space, offering peace, privacy, and plenty of natural light. Step into a warm and inviting living area centered around a cozy gas fireplace, set against a feature wall. The kitchen is a chef's delight with granite countertops, stained cabinets, and a layout perfect for entertaining. Enjoy the convenience of in-suite laundry with your own washer and dryer. As well as newer doors, furnace, and bathroom updates that give this home a fresh, move-in-ready feel. The primary bedroom offers a spacious walk-in closet, providing plenty of storage. Located in a prime area, this condo offers 2 outdoor parking stalls, is walking distance to a K-9 school, pickleball courts, and close to public transit—making daily commutes and weekend activities a breeze! Whether you're a first-time buyer, downsizer, or investor, this condo offers the ideal blend of comfort and style.

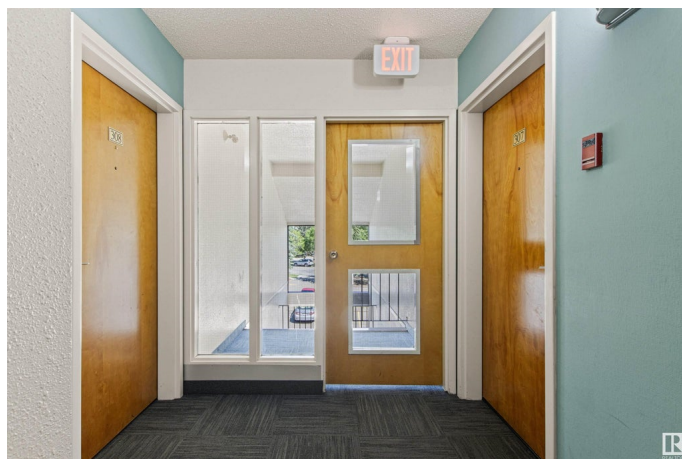
Built in 1982

## Essential Information

MLS® # E4447221

Price \$159,900

Bedrooms 2



Bathrooms	1.00
Full Baths	1
Square Footage	851
Acres	0.00
Year Built	1982
Type	Condo / Townhouse
Sub-Type	Lowrise Apartment
Style	Single Level Apartment
Status	Active

### **Community Information**

Address	307 32 Alpine Place
Area	St. Albert
Subdivision	Akinsdale
City	St. Albert
County	ALBERTA
Province	AB
Postal Code	T8N 3Y2

### **Amenities**

Amenities	Off Street Parking, On Street Parking, Deck, Intercom, Parking-Visitor, Storage-In-Suite
Parking	2 Outdoor Stalls

### **Interior**

Appliances	Dishwasher-Built-In, Dryer, Hood Fan, Refrigerator, Stove-Electric, Washer, TV Wall Mount
Heating	Forced Air-1, Natural Gas
Fireplace	Yes
Fireplaces	Insert
# of Stories	3
Stories	1
Has Basement	Yes
Basement	None, No Basement

### **Exterior**

Exterior	Wood, Vinyl
Exterior Features	Playground Nearby, Public Transportation, Schools, Shopping Nearby
Roof	Asphalt Shingles

Construction	Wood, Vinyl
Foundation	Concrete Perimeter

**School Information**

Elementary	Elmer S Gish
Middle	Elmer S Gish
High	Paul Kane

**Additional Information**

Date Listed	July 11th, 2025
Days on Market	7
Zoning	Zone 24
Condo Fee	\$497

DATA IS DEEMED RELIABLE BUT IS NOT GUARANTEED ACCURATE BY THE REALTORS® ASSOCIATION OF EDMONTON. COPYRIGHT 2025 BY THE REALTORS® ASSOCIATION OF EDMONTON. ALL RIGHTS RESERVED.Trademarks are owned or controlled by the Canadian Real Estate Association (CREA) and identify real estate professionals who are members of CREA (REALTOR®, REALTORS®) and/or the quality of services they provide (MLS®, Multiple Listing Service®)

Listing information last updated on July 18th, 2025 at 1:02am MDT