

## \$589,888 - 124 Newcastle Crescent, Sherwood Park

MLS® #E4445750

**\$589,888**

3 Bedroom, 2.50 Bathroom, 1,147 sqft

Single Family on 0.00 Acres

Nottingham, Sherwood Park, AB

Rare find in Sherwood Park. Beautifully bright and upgraded home w/ vaulted ceilings, fully developed and spacious basement, and oversized attached double car garage in a quiet neighbourhood. Upon entering, the spacious foyer (tall ceilings) and luxury vinyl plank flooring will make you feel at home. The main floor offers a modern kitchen w/ large eat-in island and quartz countertops, nice stainless steel appliances, and a pantry. Open-concept living room has a natural gas fireplace, and the dining room opens onto a large oversized deck w/ gazebo – perfect for gatherings w/ loved ones. The primary bedroom provides a walk-in closet & full ensuite bath. Secondary bedroom & half-bath complete the top floor. Downstairs has a kitchen, large family room, bedroom and full bathroom. NEW high-efficiency furnace & NEW 50 gal HWT. Outside is a private fence, beautiful backyard w/ pretty perennials & garden. Cedar shake shingles! Close proximity to parks, lakes, schools & major shopping.

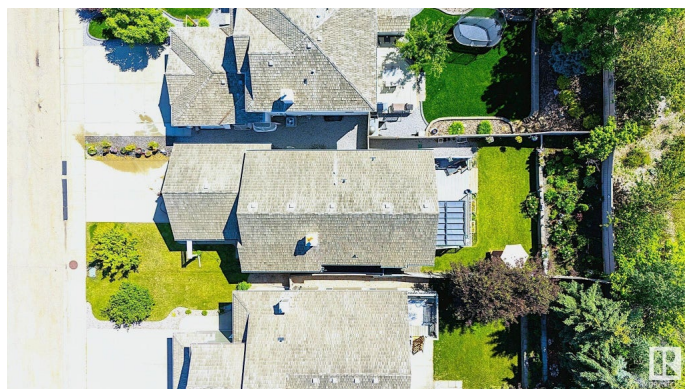
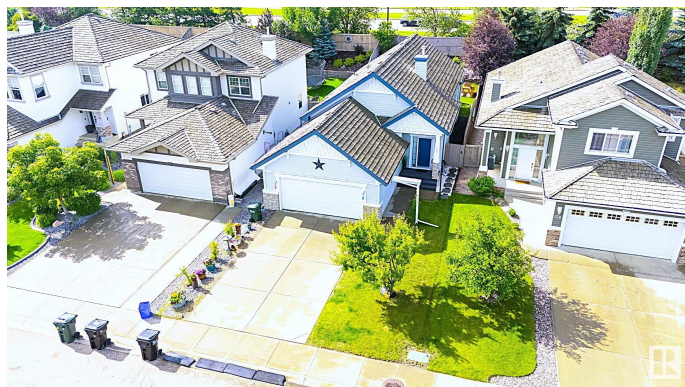
Built in 2003

### Essential Information

MLS® # E4445750

Price \$589,888

Bedrooms 3



|                |                        |
|----------------|------------------------|
| Bathrooms      | 2.50                   |
| Full Baths     | 2                      |
| Half Baths     | 1                      |
| Square Footage | 1,147                  |
| Acres          | 0.00                   |
| Year Built     | 2003                   |
| Type           | Single Family          |
| Sub-Type       | Detached Single Family |
| Style          | Bungalow               |
| Status         | Active                 |

### Community Information

|             |                        |
|-------------|------------------------|
| Address     | 124 Newcastle Crescent |
| Area        | Sherwood Park          |
| Subdivision | Nottingham             |
| City        | Sherwood Park          |
| County      | ALBERTA                |
| Province    | AB                     |
| Postal Code | T8A 6K7                |

### Amenities

|                |   |
|----------------|---|
| Amenities      | Deck, Gazebo, No Animal Home, No Smoking Home, Vaulted Ceiling, Vinyl Windows |
| Parking Spaces | 2   |
| Parking        | Double Garage Attached, Over Sized  |

### Interior

|                   |  |
|-------------------|--|
| Interior Features | ensuite bathroom   |
| Appliances        | Dishwasher-Built-In, Dryer, Garage Opener, Hood Fan, Microwave Hood Fan, Washer, Refrigerators-Two, Stoves-Two |
| Heating           | Forced Air-1, Natural Gas  |
| Fireplace         | Yes  |
| Fireplaces        | See Remarks  |
| Stories           | 2  |
| Has Basement      | Yes  |
| Basement          | Full, Finished   |

### Exterior

|          |             |
|----------|-------------|
| Exterior | Wood, Vinyl |
|----------|-------------|

|                   |   |
|-------------------|---|
| Exterior Features | Fenced, Fruit Trees/Shrubs, Landscaped, No Back Lane, Playground Nearby, Schools, Shopping Nearby |
| Roof              | Cedar Shakes  |
| Construction      | Wood, Vinyl   |
| Foundation        | Concrete Perimeter  |

**School Information**

|            |                            |
|------------|----------------------------|
| Elementary | Brentwood/F.R./WesHosford  |
| Middle     | Haythorne Junior High      |
| High       | SherwoodHeights/SalisburyC |

**Additional Information**

|                |                |
|----------------|----------------|
| Date Listed    | July 4th, 2025 |
| Days on Market | 13             |
| Zoning         | Zone 25        |

DATA IS DEEMED RELIABLE BUT IS NOT GUARANTEED ACCURATE BY THE REALTORS® ASSOCIATION OF EDMONTON. COPYRIGHT 2025 BY THE REALTORS® ASSOCIATION OF EDMONTON. ALL RIGHTS RESERVED.Trademarks are owned or controlled by the Canadian Real Estate Association (CREA) and identify real estate professionals who are members of CREA (REALTOR®, REALTORS®) and/or the quality of services they provide (MLS®, Multiple Listing Service®)

Listing information last updated on July 17th, 2025 at 3:17am MDT