

\$230,000 - 314 11615 Ellerslie Road, Edmonton

MLS® #E4445039

\$230,000

2 Bedroom, 2.00 Bathroom, 897 sqft

Condo / Townhouse on 0.00 Acres

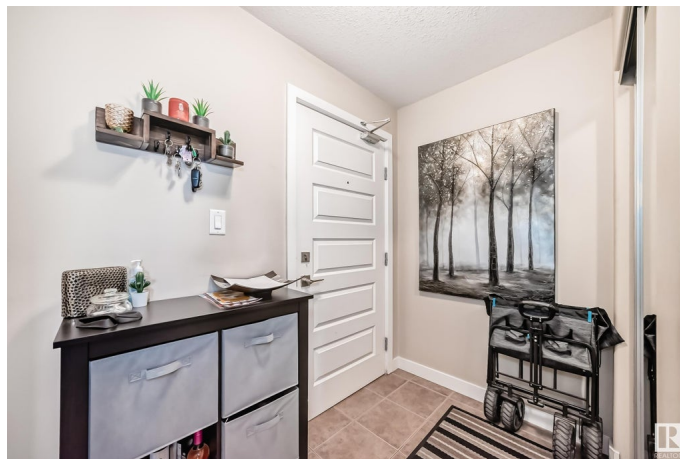
Rutherford (Edmonton), Edmonton, AB

This 2-bedroom, 2-bathroom condo offers a functional floor plan designed for both comfort and efficiency. The primary suite features a walk-through closet leading to a private 3-piece en-suite, while the second bedroom is conveniently located near a 4-piece bathroom, perfect for guests or a home office. The modern kitchen boasts dark cabinetry, granite countertops, and a large island, seamlessly flowing into the open-concept family room, creating a inviting space. A spacious laundry/storage room adds extra convenience. Enjoy outdoor living with a wrap-around balcony, and take advantage of two titled underground parking stalls. Located in a fantastic area, this condo has everything you need.

Built in 2007

Essential Information

MLS® #	E4445039
Price	\$230,000
Bedrooms	2
Bathrooms	2.00
Full Baths	2
Square Footage	897
Acres	0.00
Year Built	2007
Type	Condo / Townhouse



Sub-Type	Lowrise Apartment
Style	Single Level Apartment
Status	Active

Community Information

Address	314 11615 Ellerslie Road
Area	Edmonton
Subdivision	Rutherford (Edmonton)
City	Edmonton
County	ALBERTA
Province	AB
Postal Code	T6W 0J3

Amenities

Amenities	Detectors Smoke, Exercise Room, Intercom, Parking-Visitor
Parking Spaces	2
Parking	Heated, Underground

Interior

Interior Features	ensuite bathroom
Appliances	Dishwasher-Built-In, Dryer, Microwave Hood Fan, Refrigerator, Stove-Electric, Washer
Heating	Baseboard, Natural Gas
Fireplace	Yes
Fireplaces	Corner
# of Stories	4
Stories	4
Has Basement	Yes
Basement	None, No Basement

Exterior

Exterior	Wood, Stone, Vinyl
Exterior Features	Flat Site, Landscaped, Public Transportation, Shopping Nearby
Roof	Asphalt Shingles
Construction	Wood, Stone, Vinyl
Foundation	Concrete Perimeter

Additional Information

Date Listed	June 29th, 2025
-------------	-----------------

Days on Market	13
Zoning	Zone 55
Condo Fee	\$639

DATA IS DEEMED RELIABLE BUT IS NOT GUARANTEED ACCURATE BY THE REALTORS® ASSOCIATION OF EDMONTON. COPYRIGHT 2025 BY THE REALTORS® ASSOCIATION OF EDMONTON. ALL RIGHTS RESERVED. Trademarks are owned or controlled by the Canadian Real Estate Association (CREA) and identify real estate professionals who are members of CREA (REALTOR®, REALTORS®) and/or the quality of services they provide (MLS®, Multiple Listing Service®)

Listing information last updated on July 12th, 2025 at 7:47pm MDT