

\$635,000 - 2 Primrose Place, St. Albert

MLS® #E4444700

\$635,000

4 Bedroom, 3.50 Bathroom, 2,214 sqft

Single Family on 0.00 Acres

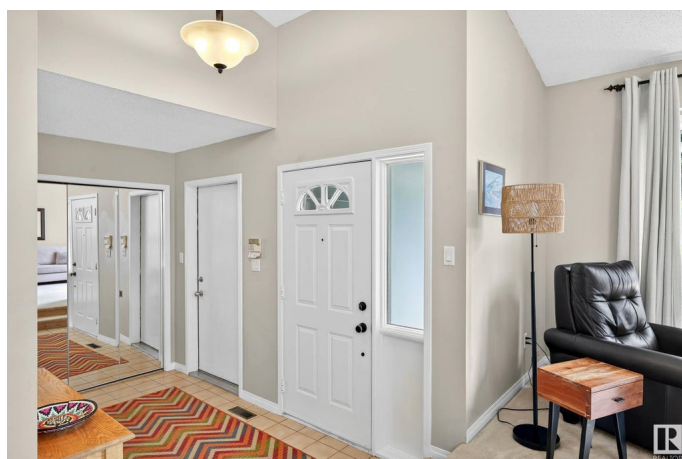
Pineview, St. Albert, AB

Location is key! Nestled on a quiet cul-de-sac in highly sought-after Parkwood, this meticulously kept 4-bedroom, 3.5-bath home is sure to impress. You'll love the peace of mind that comes with recent major upgrades, including a newer roof, windows, furnaces, central air conditioning, and hot water tank. This home truly has all the bases covered! Relax by one of two cozy fireplaces (one gas, one wood-burning) or enjoy the convenience of being just steps away from Poplar Park and K-12 schools. This is the perfect family home in a prime St. Albert location.

Built in 1985

Essential Information

MLS® #	E4444700
Price	\$635,000
Bedrooms	4
Bathrooms	3.50
Full Baths	3
Half Baths	1
Square Footage	2,214
Acres	0.00
Year Built	1985
Type	Single Family
Sub-Type	Detached Single Family
Style	2 Storey



Status	Active
--------	--------

Community Information

Address	2 Primrose Place
Area	St. Albert
Subdivision	Pineview
City	St. Albert
County	ALBERTA
Province	AB
Postal Code	T8N 5G4

Amenities

Amenities	Air Conditioner, Deck, Detectors Smoke, Fire Pit, No Smoking Home, Parking-Extra, R.V. Storage, Vaulted Ceiling, Vinyl Windows
Parking	Double Garage Attached, Front Drive Access, Insulated, RV Parking

Interior

Interior Features	ensuite bathroom
Appliances	Air Conditioning-Central, Dishwasher-Built-In, Dryer, Garage Control, Oven-Microwave, Refrigerator, Stove-Electric, Washer, Window Coverings
Heating	Forced Air-2, Natural Gas
Fireplace	Yes
Fireplaces	Brick Facing, Glass Door
Stories	3
Has Basement	Yes
Basement	Full, Finished

Exterior

Exterior	Wood, Brick, Vinyl
Exterior Features	Corner Lot, Golf Nearby, Landscaped, Playground Nearby, Private Setting, Public Transportation, Schools, Shopping Nearby
Roof	Asphalt Shingles
Construction	Wood, Brick, Vinyl
Foundation	Concrete Perimeter

School Information

Elementary	École Sacré Coeur
Middle	Sainte Marguerite Youville
High	Paul Kane

Additional Information

Date Listed June 27th, 2025
Days on Market 6
Zoning Zone 24

DATA IS DEEMED RELIABLE BUT IS NOT GUARANTEED ACCURATE BY THE REALTORS® ASSOCIATION OF EDMONTON. COPYRIGHT 2025 BY THE REALTORS® ASSOCIATION OF EDMONTON. ALL RIGHTS RESERVED.Trademarks are owned or controlled by the Canadian Real Estate Association (CREA) and identify real estate professionals who are members of CREA (REALTOR®, REALTORS®) and/or the quality of services they provide (MLS®, Multiple Listing Service®)
Listing information last updated on July 3rd, 2025 at 6:03pm MDT