

\$449,000 - 1991 Avondale Court, Sherwood Park

MLS® #E4444670

\$449,000

3 Bedroom, 2.00 Bathroom, 1,167 sqft

Single Family on 0.00 Acres

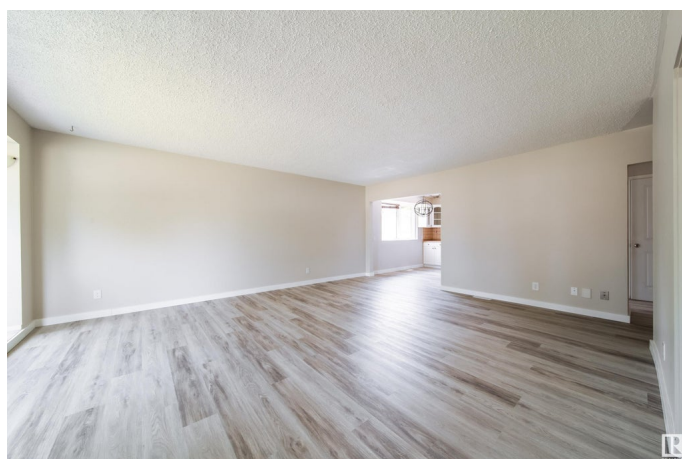
Broadmoor, Sherwood Park, AB

Renovated fully finished home on large 736m2 or 7,922 sq. ft. lot. Located on private quiet cul-de-sac street. In the past year basement bathroom was gutted and underconcrete plumbing replace; as well some of subfloor was replaced. All new 5G laminate flooring through out both levels. Newer high-efficiency furnace and vinyl windows. Basement had a second kitchen, which was redesigned to have laundry facilities. Cabinets were removed to repair flooring. Basement bathroom has all new drywall around tub area. Still some finishing touches to make this a perfect home. Close to schools, Centre in the Park and famous kids play area, Pool, Golf, Festival Place, shopping, the Arena and public transportation.

Built in 1962

Essential Information

| | |
|----------------|-----------|
| MLS® # | E4444670 |
| Price | \$449,000 |
| Bedrooms | 3 |
| Bathrooms | 2.00 |
| Full Baths | 2 |
| Square Footage | 1,167 |
| Acres | 0.00 |
| Year Built | 1962 |



| | |
|----------|------------------------|
| Type | Single Family |
| Sub-Type | Detached Single Family |
| Style | Bungalow |
| Status | Active |

Community Information

| | |
|-------------|---------------------|
| Address | 1991 Avondale Court |
| Area | Sherwood Park |
| Subdivision | Broadmoor |
| City | Sherwood Park |
| County | ALBERTA |
| Province | AB |
| Postal Code | T8A 0Y1 |

Amenities

| | |
|----------------|------------------------------------|
| Amenities | R.V. Storage |
| Parking Spaces | 5 |
| Parking | RV Parking, Single Garage Attached |

Interior

| | |
|--------------|---|
| Appliances | Dishwasher-Built-In, Dryer, Storage Shed, Washer, Refrigerators-Two, Stoves-Two |
| Heating | Forced Air-1, Natural Gas |
| Fireplace | Yes |
| Fireplaces | Glass Door |
| Stories | 2 |
| Has Basement | Yes |
| Basement | Full, Finished |

Exterior

| | |
|-------------------|--|
| Exterior | Wood, Stucco, Vinyl |
| Exterior Features | Fenced, Flat Site, Golf Nearby, Landscaped, No Back Lane, No Through Road, Playground Nearby, Private Setting, Public Swimming Pool, Public Transportation, Schools, Shopping Nearby |
| Roof | Asphalt Shingles |
| Construction | Wood, Stucco, Vinyl |
| Foundation | Concrete Perimeter |

Additional Information

| | |
|-------------|-----------------|
| Date Listed | June 27th, 2025 |
|-------------|-----------------|

Days on Market 19

Zoning Zone 25

DATA IS DEEMED RELIABLE BUT IS NOT GUARANTEED ACCURATE BY THE REALTORS® ASSOCIATION OF EDMONTON. COPYRIGHT 2025 BY THE REALTORS® ASSOCIATION OF EDMONTON. ALL RIGHTS RESERVED. Trademarks are owned or controlled by the Canadian Real Estate Association (CREA) and identify real estate professionals who are members of CREA (REALTOR®, REALTORS®) and/or the quality of services they provide (MLS®, Multiple Listing Service®)

Listing information last updated on July 15th, 2025 at 9:47pm MDT