

\$200,000 - 204 160 Kingswood Boulevard, St. Albert

MLS® #E4444199

\$200,000

1 Bedroom, 1.00 Bathroom, 831 sqft

Condo / Townhouse on 0.00 Acres

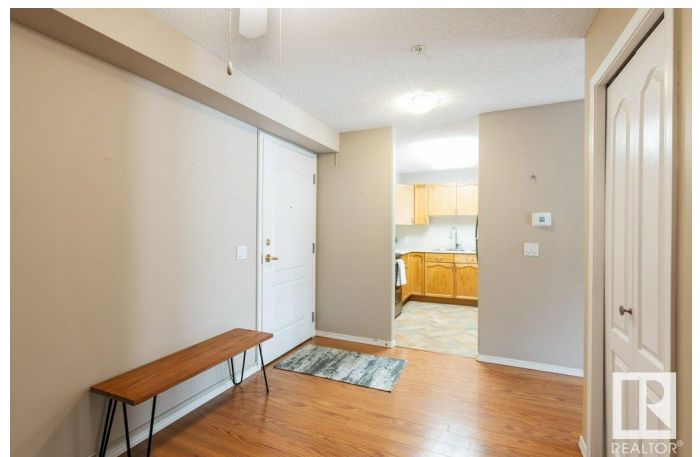
Kingswood, St. Albert, AB

Welcome to this bright and spacious 55+ apartment condo in the desirable community of Kingswood, St. Albert! This well-maintained 830 sq ft unit features an inviting open layout with open kitchen that flows seamlessly into the dining area. Enjoy rich cabinetry, ample cupboard space & some newer SS appliances—perfect for preparing meals & entertaining with ease. The home includes one large bedroom, a full 4-piece bathroom (with access from primary) a versatile den for office/hobby use & convenient in-suite stacked laundry. The sunny south-facing balcony fills the space with natural light & offers a peaceful place to relax. The well-managed building boasts a wide range of amenities including a guest suite, social room, craft room, book nook, & more. It also features underground parking & is fully wheelchair accessible. Located close to public transportation, Servus Place, walking trails, this condo offers comfort, community & convenience in a fantastic location. A perfect place to call home!

Built in 2000

Essential Information

MLS® #	E4444199
Price	\$200,000
Bedrooms	1



Bathrooms	1.00
Full Baths	1
Square Footage	831
Acres	0.00
Year Built	2000
Type	Condo / Townhouse
Sub-Type	Lowrise Apartment
Style	Single Level Apartment
Status	Active

Community Information

Address	204 160 Kingswood Boulevard
Area	St. Albert
Subdivision	Kingswood
City	St. Albert
County	ALBERTA
Province	AB
Postal Code	T8N 6Z2

Amenities

Amenities	Deck, Parking-Visitor, Social Rooms, See Remarks
Parking	Stall, Underground

Interior

Appliances	Dishwasher-Built-In, Oven-Microwave, Refrigerator, Stacked Washer/Dryer, Stove-Electric, Window Coverings
Heating	In Floor Heat System, Natural Gas
# of Stories	3
Stories	1
Has Basement	Yes
Basement	None, No Basement

Exterior

Exterior	Wood, Brick, Vinyl
Exterior Features	Public Transportation, Shopping Nearby
Roof	Asphalt Shingles
Construction	Wood, Brick, Vinyl
Foundation	Concrete Perimeter

Additional Information

Date Listed	June 25th, 2025
Days on Market	20
Zoning	Zone 24
Condo Fee	\$584

DATA IS DEEMED RELIABLE BUT IS NOT GUARANTEED ACCURATE BY THE REALTORS® ASSOCIATION OF EDMONTON. COPYRIGHT 2025 BY THE REALTORS® ASSOCIATION OF EDMONTON. ALL RIGHTS RESERVED. Trademarks are owned or controlled by the Canadian Real Estate Association (CREA) and identify real estate professionals who are members of CREA (REALTOR®, REALTORS®) and/or the quality of services they provide (MLS®, Multiple Listing Service®)

Listing information last updated on July 15th, 2025 at 3:33pm MDT