

\$160,000 - 3 14110 80 Street, Edmonton

MLS® #E4443238

\$160,000

2 Bedroom, 2.00 Bathroom, 905 sqft
Condo / Townhouse on 0.00 Acres

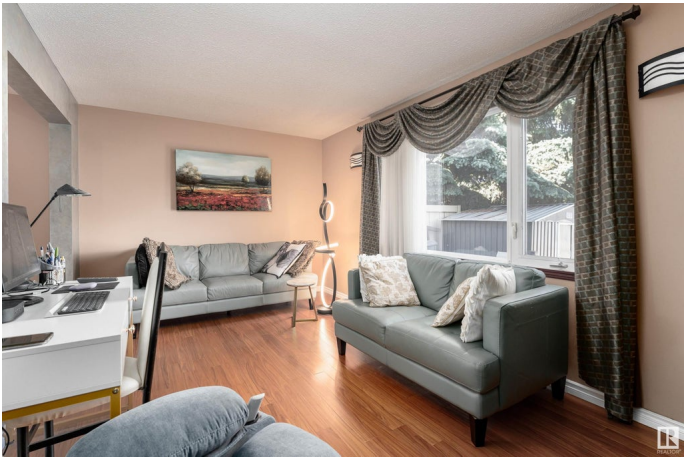
Kildare, Edmonton, AB

Cute as a button and move-in ready! This stylish townhouse has all the right features, starting with an oversized primary bedroom that offers plenty of space to relax and unwind. The bright white kitchen opens to a cozy dining area, and the east-facing patio is perfect for morning coffee or soaking up the sunshine. You'll love the convenience of two full bathrooms and a fully finished basement, offering extra living space for a rec room, office, or guests. Ample street parking makes it easy for visitors, and the location is close to everything you need including shops, schools, parks and major commuting roadways. Whether you're a first-time buyer, downsizer, or investor, this one checks all the boxes!

Built in 1971

Essential Information

MLS® #	E4443238
Price	\$160,000
Bedrooms	2
Bathrooms	2.00
Full Baths	2
Square Footage	905
Acres	0.00
Year Built	1971
Type	Condo / Townhouse



Sub-Type	Townhouse
Style	2 Storey
Status	Active

Community Information

Address	3 14110 80 Street
Area	Edmonton
Subdivision	Kildare
City	Edmonton
County	ALBERTA
Province	AB
Postal Code	T5C 1L6

Amenities

Amenities	On Street Parking, Hot Water Natural Gas, No Smoking Home, Patio, See Remarks
Parking	Stall

Interior

Appliances	Dishwasher-Built-In, Dryer, Microwave Hood Fan, Refrigerator, Stove-Electric, Washer, Curtains and Blinds
Heating	Forced Air-1, Natural Gas
Stories	3
Has Basement	Yes
Basement	Full, Finished

Exterior

Exterior	Wood, Vinyl
Exterior Features	Fenced, Landscaped, Low Maintenance Landscape, See Remarks
Roof	Asphalt Shingles
Construction	Wood, Vinyl
Foundation	Concrete Perimeter

Additional Information

Date Listed	June 19th, 2025
Days on Market	16
Zoning	Zone 02
Condo Fee	\$380

DATA IS DEEMED RELIABLE BUT IS NOT GUARANTEED ACCURATE BY THE REALTORS® ASSOCIATION OF EDMONTON. COPYRIGHT 2025 BY THE REALTORS® ASSOCIATION OF EDMONTON. ALL RIGHTS

RESERVED.Trademarks are owned or controlled by the Canadian Real Estate Association (CREA) and identify real estate professionals who are members of CREA (REALTOR®, REALTORS®) and/or the quality of services they provide (MLS®, Multiple Listing Service®)

Listing information last updated on July 5th, 2025 at 2:47am MDT