

\$429,900 - 11744 37 Avenue, Edmonton

MLS® #E4442997

\$429,900

3 Bedroom, 2.00 Bathroom, 1,094 sqft

Single Family on 0.00 Acres

Greenfield, Edmonton, AB

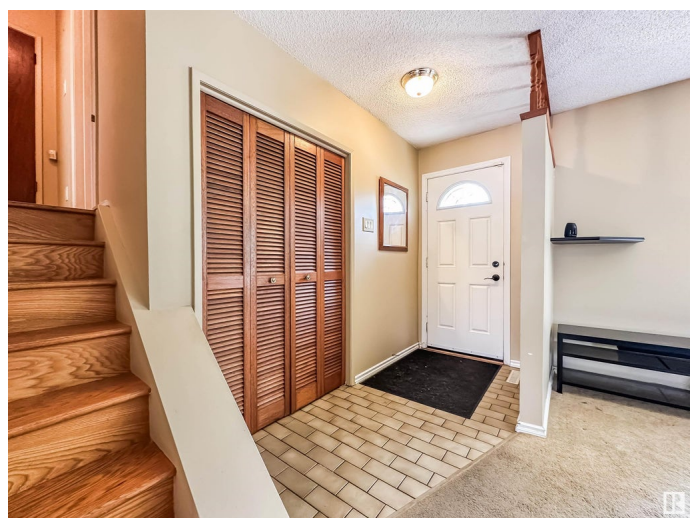
GREENFIELD 4-LEVEL SPLIT ON A MATURE LOT Beautifully maintained 2+2 bedroom, 2 bath home offering over 2,000 sq ft of finished living space in the heart of family-friendly Greenfield. Step inside to a bright living room with large windows and a stunning floor-to-ceiling stone fireplace. The dedicated dining space connects to a spacious kitchen with tall oak cabinetry, quartz counters, plenty of prep space, and a handy built-in desk. Upstairs you'll find the large primary bedroom, second bedroom, and full bath. The lower level includes two more bedrooms and a 3-piece bath, perfect for guests or teens. The basement is open for future development. Upgrades include the roof (2024), plus the furnace, hot water tank, kitchen, bathrooms, windows, appliances, and sidewalks were all updated by the previous owner. Enjoy a fully fenced yard with mature trees, patio, and oversized double detached garage. Quiet location, walking distance to sought after schools, parks, and playgrounds. Welcome home!

Built in 1967

Essential Information

MLS® # E4442997

Price \$429,900



Bedrooms	3
Bathrooms	2.00
Full Baths	2
Square Footage	1,094
Acres	0.00
Year Built	1967
Type	Single Family
Sub-Type	Detached Single Family
Style	4 Level Split
Status	Active

Community Information

Address	11744 37 Avenue
Area	Edmonton
Subdivision	Greenfield
City	Edmonton
County	ALBERTA
Province	AB
Postal Code	T6J 0J2

Amenities

Amenities	Off Street Parking, Patio, Vinyl Windows
Parking Spaces	4
Parking	Double Garage Detached

Interior

Appliances	Dishwasher-Built-In, Dryer, Garage Control, Garage Opener, Microwave Hood Fan, Refrigerator, Stove-Electric, Vacuum System Attachments, Vacuum Systems, Washer, Window Coverings, See Remarks
Heating	Forced Air-1, Natural Gas
Fireplace	Yes
Fireplaces	Brick Facing, Corner
Stories	3
Has Basement	Yes
Basement	Full, Unfinished

Exterior

Exterior	Wood, Vinyl
Exterior Features	Landscaped, Park/Reserve, Playground Nearby, Schools, Shopping

	Nearby
Roof	Asphalt Shingles
Construction	Wood, Vinyl
Foundation	Concrete Perimeter

Additional Information

Date Listed	June 18th, 2025
Days on Market	21
Zoning	Zone 16

DATA IS DEEMED RELIABLE BUT IS NOT GUARANTEED ACCURATE BY THE REALTORS® ASSOCIATION OF EDMONTON. COPYRIGHT 2025 BY THE REALTORS® ASSOCIATION OF EDMONTON. ALL RIGHTS RESERVED. Trademarks are owned or controlled by the Canadian Real Estate Association (CREA) and identify real estate professionals who are members of CREA (REALTOR®, REALTORS®) and/or the quality of services they provide (MLS®, Multiple Listing Service®)

Listing information last updated on July 9th, 2025 at 8:17pm MDT