

# **\$435,000 - 1060 Watt Promenade Promenade, Edmonton**

MLS® #E4442212

**\$435,000**

3 Bedroom, 2.50 Bathroom, 1,535 sqft  
Single Family on 0.00 Acres

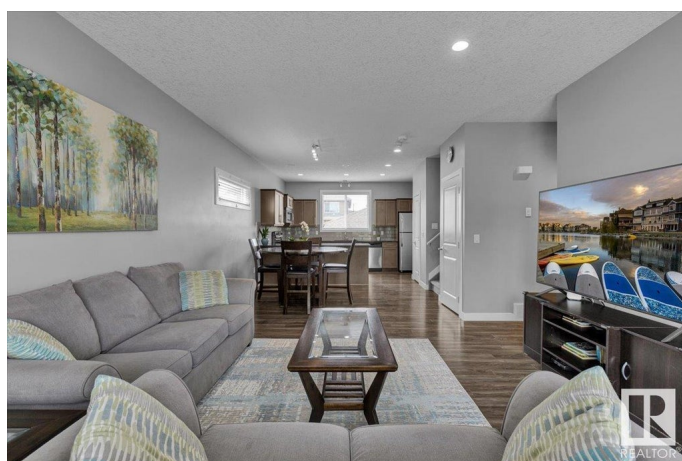
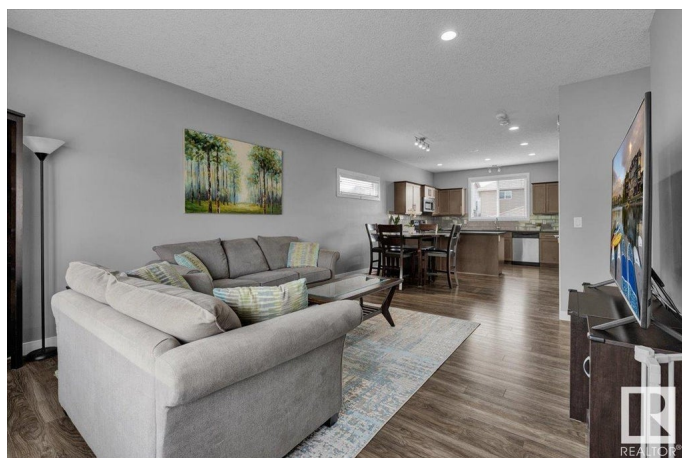
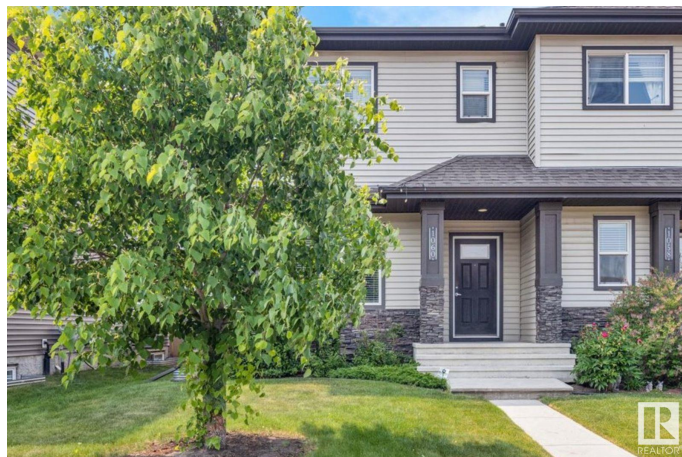
Walker, Edmonton, AB

Fantastic home in like new condition! Spacious floor plan with kitchen open to dining area and great room. Modern kitchen with granite counters, tile backsplash and stainless steel appliances. Large primary bedroom with walk in closet and full ensuite bath. Additional features include central air conditioning, main floor laundry and revised deck. Shows extremely well! For more details please visit the REALTOR®'s Website.

Built in 2014

## **Essential Information**

MLS® #	E4442212
Price	\$435,000
Bedrooms	3
Bathrooms	2.50
Full Baths	2
Half Baths	1
Square Footage	1,535
Acres	0.00
Year Built	2014
Type	Single Family
Sub-Type	Half Duplex
Style	2 Storey
Status	Active



## Community Information

Address	1060 Watt Promenade Promenade
Area	Edmonton
Subdivision	Walker
City	Edmonton
County	ALBERTA
Province	AB
Postal Code	T6X 1T7

## Amenities

Amenities	Air Conditioner, Deck
Parking Spaces	4
Parking	Double Garage Detached

## Interior

Interior Features	ensuite bathroom
Appliances	Dishwasher-Built-In, Dryer, Garage Control, Garage Opener, Refrigerator, Stove-Electric, Washer, Curtains and Blinds
Heating	Forced Air-1, Natural Gas
Stories	2
Has Basement	Yes
Basement	Full, Unfinished

## Exterior

Exterior	Wood, Stone, Vinyl
Exterior Features	Back Lane, Landscaped, Playground Nearby, Public Transportation, Schools, Shopping Nearby
Roof	Asphalt Shingles
Construction	Wood, Stone, Vinyl
Foundation	Concrete Perimeter

## School Information

Elementary	Shauna May/Corpus Christi
Middle	Shauna May/Corpus Christi
High	Elder Dr. F/Holy Trinity

## Additional Information

Date Listed	June 13th, 2025
Days on Market	3
Zoning	Zone 53

HOA Fees 100

HOA Fees Freq. Annually

DATA IS DEEMED RELIABLE BUT IS NOT GUARANTEED ACCURATE BY THE REALTORS® ASSOCIATION OF EDMONTON. COPYRIGHT 2025 BY THE REALTORS® ASSOCIATION OF EDMONTON. ALL RIGHTS RESERVED. Trademarks are owned or controlled by the Canadian Real Estate Association (CREA) and identify real estate professionals who are members of CREA (REALTOR®, REALTORS®) and/or the quality of services they provide (MLS®, Multiple Listing Service®)

Listing information last updated on June 16th, 2025 at 2:02pm MDT