

\$485,000 - 86 Grayridge Crescent, Stony Plain

MLS® #E4441496

\$485,000

4 Bedroom, 3.50 Bathroom, 1,679 sqft

Single Family on 0.00 Acres

Graybriar, Stony Plain, AB

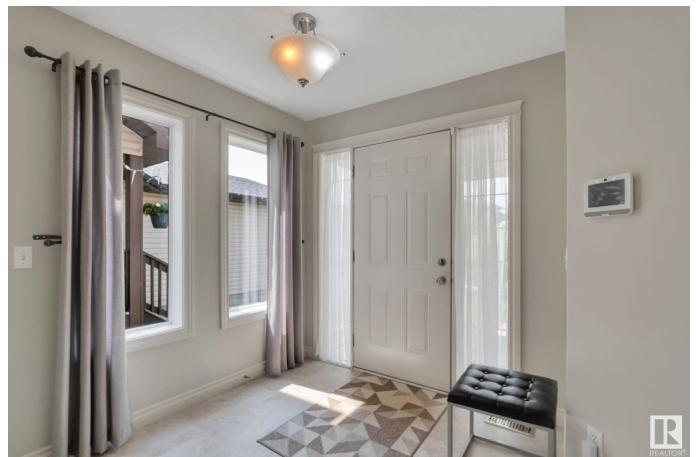
IMMACULATE fully finished 2-storey home in Stony Plain's Graybriar subdivision! Feel at home the moment you walk in the door! Large entrance with room to remove coats and shoes. Open concept floorplan with great kitchen. Tons of counter space, new black-stainless appliances and a corner pantry! Dining area features tons of natural light & plenty of space to expand to host family & friends. Large living room with gas fireplace & more large windows. MAIN FLOOR LAUNDRY! Upstairs the master suite has room for king size furniture. 5pc ensuite and a walk in closet! 2 more bedrooms are great for kids, guests or working from home! Basement is fully developed with another great family room area. Another bedroom and another bathroom too! Double attached garage is great to keep snow off the vehicle in the winter! Oversized driveway leaves plenty of room for an RV or additional vehicles. Back deck is the perfect spot to enjoy a drink on a nice summer evening. Fenced yard with walking bath beside you too!

Built in 2006

Essential Information

MLS® # E4441496

Price \$485,000



Bedrooms	4
Bathrooms	3.50
Full Baths	3
Half Baths	1
Square Footage	1,679
Acres	0.00
Year Built	2006
Type	Single Family
Sub-Type	Detached Single Family
Style	2 Storey
Status	Active

Community Information

Address	86 Grayridge Crescent
Area	Stony Plain
Subdivision	Graybriar
City	Stony Plain
County	ALBERTA
Province	AB
Postal Code	T7Z 0A1

Amenities

Amenities	Air Conditioner, Closet Organizers, Deck, Detectors Smoke, Exterior Walls- 2"x6", Front Porch, No Animal Home, No Smoking Home, Vinyl Windows
Parking	Double Garage Attached

Interior

Interior Features	ensuite bathroom
Appliances	Air Conditioning-Central, Dishwasher-Built-In, Dryer, Garage Control, Garage Opener, Microwave Hood Fan, Refrigerator, Stove-Electric, Washer, Window Coverings
Heating	Forced Air-1, Natural Gas
Fireplace	Yes
Fireplaces	Direct Vent
Stories	3
Has Basement	Yes
Basement	Full, Finished

Exterior

Exterior	Wood, Vinyl
Exterior Features	Fenced, Flat Site, Golf Nearby, Landscaped, Level Land
Roof	Asphalt Shingles
Construction	Wood, Vinyl
Foundation	Concrete Perimeter

Additional Information

Date Listed	June 10th, 2025
Days on Market	7
Zoning	Zone 91

DATA IS DEEMED RELIABLE BUT IS NOT GUARANTEED ACCURATE BY THE REALTORS® ASSOCIATION OF EDMONTON. COPYRIGHT 2025 BY THE REALTORS® ASSOCIATION OF EDMONTON. ALL RIGHTS RESERVED.Trademarks are owned or controlled by the Canadian Real Estate Association (CREA) and identify real estate professionals who are members of CREA (REALTOR®, REALTORS®) and/or the quality of services they provide (MLS®, Multiple Listing Service®)

Listing information last updated on June 17th, 2025 at 12:17am MDT