

\$578,800 - 16614 75a Street, Edmonton

MLS® #E4434743

\$578,800

3 Bedroom, 3.00 Bathroom, 1,957 sqft
Single Family on 0.00 Acres

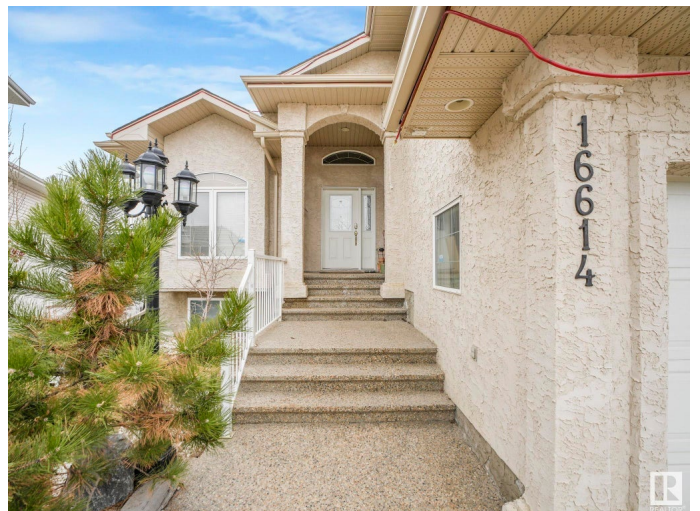
Mayliewan, Edmonton, AB

Welcome to this stunning custom-built bi-level home, offering over 3,000 sq ft of beautifully designed living space, nestled in a quiet cul-de-sac in sought-after Mayliewan. Boasting 5 spacious bedrooms plus a den and 3 full bathrooms, this home features an open-concept layout with gleaming hardwood floors, elegant built-ins, and a cozy fireplace. The gourmet kitchen is equipped with stainless steel appliances (2022), a raised island, and a walk-in pantry—perfect for both everyday living and entertaining. The primary suite impresses with a walk-in closet and a private ensuite. Downstairs, the fully finished basement showcases soaring 9'™ ceilings and two additional bedrooms. Step outside to enjoy the beautifully landscaped yard, complete with a deck, tranquil fountains, a serene pond. Additional highlights include a newer furnace (2023), hot water tank (2020), central A/C, stucco exterior, and an exposed aggregate driveway. This exceptional home is the perfect blend of luxury, comfort, and function.

Built in 2004

Essential Information

MLS® #	E4434743
Price	\$578,800



Bedrooms	3
Bathrooms	3.00
Full Baths	3
Square Footage	1,957
Acres	0.00
Year Built	2004
Type	Single Family
Sub-Type	Detached Single Family
Style	Bi-Level
Status	Active

Community Information

Address	16614 75a Street
Area	Edmonton
Subdivision	Mayliewan
City	Edmonton
County	ALBERTA
Province	AB
Postal Code	T5Z 3W2

Amenities

Amenities	Deck, 9 ft. Basement Ceiling
Parking	Double Garage Attached

Interior

Interior Features	ensuite bathroom
Appliances	Dishwasher-Built-In, Dryer, Freezer, Garage Opener, Hood Fan, Refrigerator, Stove-Electric, Washer
Heating	Forced Air-1, Natural Gas
Stories	2
Has Basement	Yes
Basement	Full, Finished

Exterior

Exterior	Wood, Stucco
Exterior Features	Cul-De-Sac, Fenced, Fruit Trees/Shrubs, Landscaped, Playground Nearby, Public Transportation, Schools, Shopping Nearby
Roof	Asphalt Shingles
Construction	Wood, Stucco

Foundation Concrete Perimeter

School Information

Elementary Florence Hallock School
Middle Florence Hallock School
High M.E Lazerte School

Additional Information

Date Listed May 5th, 2025
Days on Market 43
Zoning Zone 28

DATA IS DEEMED RELIABLE BUT IS NOT GUARANTEED ACCURATE BY THE REALTORS® ASSOCIATION OF EDMONTON. COPYRIGHT 2025 BY THE REALTORS® ASSOCIATION OF EDMONTON. ALL RIGHTS RESERVED.Trademarks are owned or controlled by the Canadian Real Estate Association (CREA) and identify real estate professionals who are members of CREA (REALTOR®, REALTORS®) and/or the quality of services they provide (MLS®, Multiple Listing Service®)
Listing information last updated on June 16th, 2025 at 10:47pm MDT