

\$574,900 - 93 Kingsbury Circle, Spruce Grove

MLS® #E4433444

\$574,900

3 Bedroom, 2.50 Bathroom, 2,038 sqft

Single Family on 0.00 Acres

Kenton, Spruce Grove, AB

Discover this spacious, better than new 2 storey home in the community of Kenton. The front entrance welcomes guests w/ vinyl plank flooring that spreads through the main floor's open design. The kitchen features white cabinetry w/ crown moulding on the uppers, walk through pantry, huge eating bar island, patio door access to the back yard, s/s appliances, tile backsplash, pot/pan drawers & quartz counters. The dining area can accommodate a large table & has a transom window for additional light. The living room has an electric f/p. The 2nd level has a large bonus room w/ vaulted ceilings, unique loft style office area, 3 bedrooms, laundry room, a 4pce bath & a 4pce en suite. The primary bedroom features a walk in closet. The basement is unspoiled w/ 2 windows & a bathroom rough in for your future needs. The main floor & the basement level have 9'6"™ ceiling height. The fenced south-facing backyard has a deck & numerous trees/shrubs. A double attached garage completes this move in ready home.

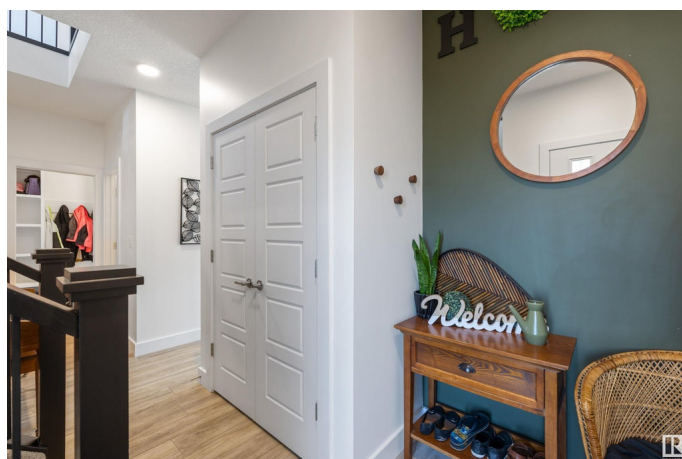
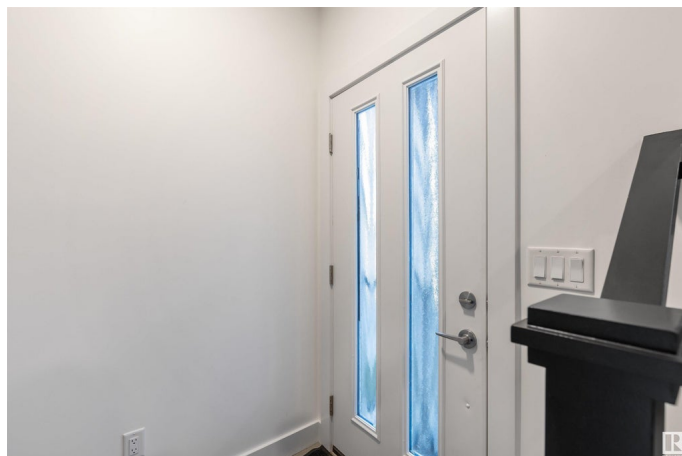
Built in 2021

Essential Information

MLS® # E4433444

Price \$574,900

Bedrooms 3



Bathrooms	2.50
Full Baths	2
Half Baths	1
Square Footage	2,038
Acres	0.00
Year Built	2021
Type	Single Family
Sub-Type	Detached Single Family
Style	2 Storey
Status	Active

Community Information

Address	93 Kingsbury Circle
Area	Spruce Grove
Subdivision	Kenton
City	Spruce Grove
County	ALBERTA
Province	AB
Postal Code	T7X 0C9

Amenities

Amenities	Ceiling 9 ft., Vaulted Ceiling, See Remarks
Parking	Double Garage Attached

Interior

Interior Features	ensuite bathroom
Appliances	Dishwasher-Built-In, Dryer, Garage Control, Garage Opener, Microwave Hood Fan, Refrigerator, Stove-Electric, Washer, Window Coverings
Heating	Forced Air-1, Natural Gas
Fireplace	Yes
Fireplaces	Mantel
Stories	2
Has Basement	Yes
Basement	Full, Unfinished

Exterior

Exterior	Wood, Stone, Vinyl
Exterior Features	Fenced, Landscaped, Public Transportation, Shopping Nearby, See Remarks

Roof	Asphalt Shingles
Construction	Wood, Stone, Vinyl
Foundation	Concrete Perimeter

Additional Information

Date Listed	April 30th, 2025
Days on Market	1
Zoning	Zone 91

DATA IS DEEMED RELIABLE BUT IS NOT GUARANTEED ACCURATE BY THE REALTORS® ASSOCIATION OF EDMONTON. COPYRIGHT 2025 BY THE REALTORS® ASSOCIATION OF EDMONTON. ALL RIGHTS RESERVED.Trademarks are owned or controlled by the Canadian Real Estate Association (CREA) and identify real estate professionals who are members of CREA (REALTOR®, REALTORS®) and/or the quality of services they provide (MLS®, Multiple Listing Service®)

Listing information last updated on May 1st, 2025 at 1:17pm MDT