

\$517,900 - 832 Rowan Close, Edmonton

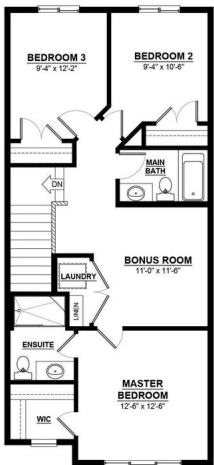
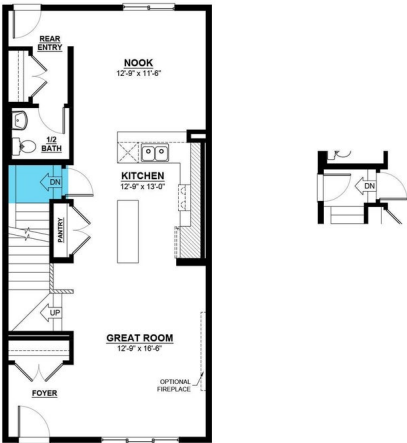
MLS® #E4431996

\$517,900

3 Bedroom, 2.50 Bathroom, 1,707 sqft
Single Family on 0.00 Acres

The Orchards At Ellerslie, Edmonton, AB

Welcome to your dream home in The Orchards at Ellerslie, a vibrant and picturesque community in South Edmonton! This stunning new build "Tiguan" Model built by Daytona Homes offers 3 spacious bedrooms, 2.5 bathrooms, and a separate side entrance, making it perfect for growing families or future legal suite. Nestled in a naturally beautiful area, The Orchards is defined by its fruit trees, colorful blossoms, and oversized green spaces. Residents enjoy exclusive access to a private club with a recreation center, spray park, and picnic area, making it a haven for family fun. Tree-lined walkways and parks offer the perfect backdrop for outdoor activities, while the rich architectural details and affordable pricing make this one of south Edmonton's most sought-after communities. Don't miss out on this perfect blend of style, space, and location!



Built in 2025

Essential Information

MLS® #	E4431996
Price	\$517,900
Bedrooms	3
Bathrooms	2.50
Full Baths	2
Half Baths	1

Square Footage	1,707
Acres	0.00
Year Built	2025
Type	Single Family
Sub-Type	Detached Single Family
Style	2 Storey
Status	Active

Community Information

Address	832 Rowan Close
Area	Edmonton
Subdivision	The Orchards At Ellerslie
City	Edmonton
County	ALBERTA
Province	AB
Postal Code	T6X 3J4

Amenities

Amenities	See Remarks
Parking	Parking Pad Cement/Paved

Interior

Interior Features	ensuite bathroom
Appliances	Hood Fan
Heating	Forced Air-1, Natural Gas
Stories	2
Has Basement	Yes
Basement	Full, Unfinished

Exterior

Exterior	Wood, Vinyl
Exterior Features	See Remarks
Roof	Asphalt Shingles
Construction	Wood, Vinyl
Foundation	Concrete Perimeter

Additional Information

Date Listed	April 21st, 2025
Days on Market	12

Zoning Zone 53

HOA Fees Freq. Annually

DATA IS DEEMED RELIABLE BUT IS NOT GUARANTEED ACCURATE BY THE REALTORS® ASSOCIATION OF EDMONTON. COPYRIGHT 2025 BY THE REALTORS® ASSOCIATION OF EDMONTON. ALL RIGHTS RESERVED. Trademarks are owned or controlled by the Canadian Real Estate Association (CREA) and identify real estate professionals who are members of CREA (REALTOR®, REALTORS®) and/or the quality of services they provide (MLS®, Multiple Listing Service®)

Listing information last updated on May 3rd, 2025 at 10:47am MDT