

## \$149,900 - 204 11445 Ellerslie Road, Edmonton

MLS® #E4429843

**\$149,900**

1 Bedroom, 1.00 Bathroom, 594 sqft

Condo / Townhouse on 0.00 Acres

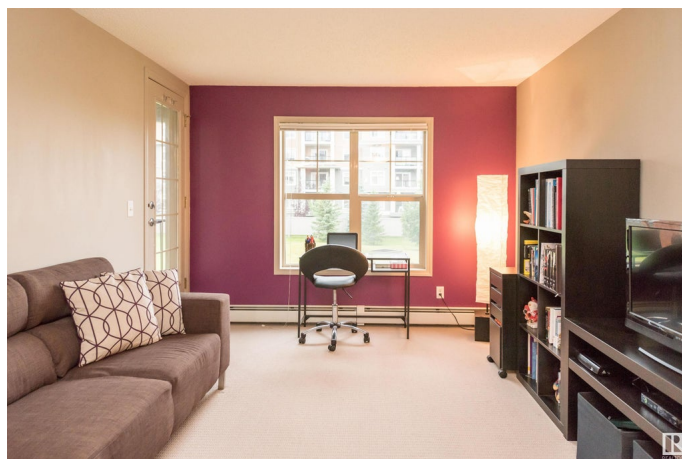
Rutherford (Edmonton), Edmonton, AB

This ideal one bedroom condo is located in RUTHERFORD VILLAGE. This unit exhibits an open area concept with a large living room and a gourmet style kitchen with a breakfast island. The spacious bedroom has access to the 4-piece bathroom with another entrance to the main unit. Enjoy the convenience of UNDERGROUND PARKING and STORAGE LOCKER as well as in-suite laundry. Enjoy the summers on the covered private BALCONY! This building is close to all amenities including shopping, restaurants, public transportation, LRT and Anthony Henday. The seller to provide \$1000 REBATE for refrigerator replacement"

Built in 2005

### Essential Information

MLS® #	E4429843
Price	\$149,900
Bedrooms	1
Bathrooms	1.00
Full Baths	1
Square Footage	594
Acres	0.00
Year Built	2005
Type	Condo / Townhouse
Sub-Type	Lowrise Apartment



Style	Single Level Apartment
Status	Active

### Community Information

Address	204 11445 Ellerslie Road
Area	Edmonton
Subdivision	Rutherford (Edmonton)
City	Edmonton
County	ALBERTA
Province	AB
Postal Code	T6W 1T1

### Amenities

Amenities	Intercom, Parking-Visitor, Secured Parking, Security Door, See Remarks
Parking	Underground

### Interior

Appliances	Dishwasher-Built-In, Dryer, Refrigerator, Stove-Electric, Washer
Heating	Hot Water, Natural Gas
# of Stories	4
Stories	1
Has Basement	Yes
Basement	None, No Basement

### Exterior

Exterior	Wood, Brick, Stucco
Exterior Features	Airport Nearby, Golf Nearby, Playground Nearby, Public Transportation, Schools, Shopping Nearby, See Remarks
Roof	Asphalt Shingles
Construction	Wood, Brick, Stucco
Foundation	Concrete Perimeter

### Additional Information

Date Listed	April 9th, 2025
Days on Market	69
Zoning	Zone 55
Condo Fee	\$523

DATA IS DEEMED RELIABLE BUT IS NOT GUARANTEED ACCURATE BY THE REALTORS® ASSOCIATION OF EDMONTON. COPYRIGHT 2025 BY THE REALTORS® ASSOCIATION OF EDMONTON. ALL RIGHTS RESERVED. Trademarks are owned or controlled by the Canadian Real Estate Association (CREA) and identify real

estate professionals who are members of CREA (REALTOR®®, REALTORS®®) and/or the quality of services they provide (MLS®®, Multiple Listing Service®®)

Listing information last updated on June 17th, 2025 at 2:02am MDT