

# \$199,999 - 444 348 Windermere Road, Edmonton

MLS® #E4427365

**\$199,999**

1 Bedroom, 2.00 Bathroom, 713 sqft

Condo / Townhouse on 0.00 Acres

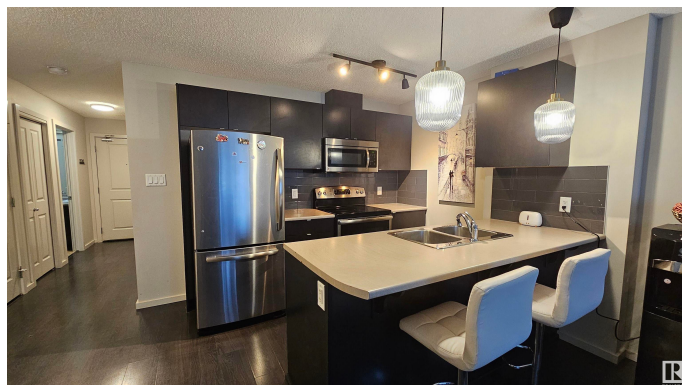
Windermere, Edmonton, AB

Introducing modern, bright TOP Floor unit featuring 1 Bedroom 2 full Bathrooms plus a huge DEN (big enough to serve as a second bedroom) in the heart of SOUTH Side of Edmonton in the community of WINDERMERE! This charming home offers in suite laundry, 1 titled parking above ground, East facing balcony, an open-concept kitchen with stainless steel appliances, a 4-piece ensuite bathroom, walk-through closet in primary bedroom. Don't miss out! Close to Schools, Shopping, Buses, Anthony Henday, Calgary Trail and Edmonton International Airport!

Built in 2014

## Essential Information

MLS® #	E4427365
Price	\$199,999
Bedrooms	1
Bathrooms	2.00
Full Baths	2
Square Footage	713
Acres	0.00
Year Built	2014
Type	Condo / Townhouse
Sub-Type	Lowrise Apartment
Style	Single Level Apartment



Status Active

## Community Information

Address 444 348 Windermere Road  
Area Edmonton  
Subdivision Windermere  
City Edmonton  
County ALBERTA  
Province AB  
Postal Code T6W 2P2

## Amenities

Amenities Parking-Visitor, See Remarks  
Parking Stall

## Interior

Interior Features ensuite bathroom  
Appliances Dishwasher-Built-In, Dryer, Microwave Hood Fan, Refrigerator,  
Stove-Electric, Washer, Window Coverings  
Heating Baseboard, Natural Gas  
# of Stories 4  
Stories 1  
Has Basement Yes  
Basement None, No Basement

## Exterior

Exterior Wood, Vinyl  
Exterior Features Golf Nearby, Schools, Shopping Nearby, See Remarks  
Roof Asphalt Shingles  
Construction Wood, Vinyl  
Foundation Concrete Perimeter

## Additional Information

Date Listed March 25th, 2025  
Days on Market 151  
Zoning Zone 56  
Condo Fee \$431

DATA IS DEEMED RELIABLE BUT IS NOT GUARANTEED ACCURATE BY THE REALTORS® ASSOCIATION OF EDMONTON. COPYRIGHT 2025 BY THE REALTORS® ASSOCIATION OF EDMONTON. ALL RIGHTS RESERVED. Trademarks are owned or controlled by the Canadian Real Estate Association (CREA) and identify real

estate professionals who are members of CREA (REALTOR®®, REALTORS®®) and/or the quality of services they provide (MLS®®, Multiple Listing Service®®)

Listing information last updated on August 23rd, 2025 at 6:47pm MDT