

\$594,800 - 4630 Charles Way Sw, Edmonton

MLS® #E4204206

\$594,800

4 Bedroom, 4.00 Bathroom, 2,610 sqft
Single Family on 0 Acres

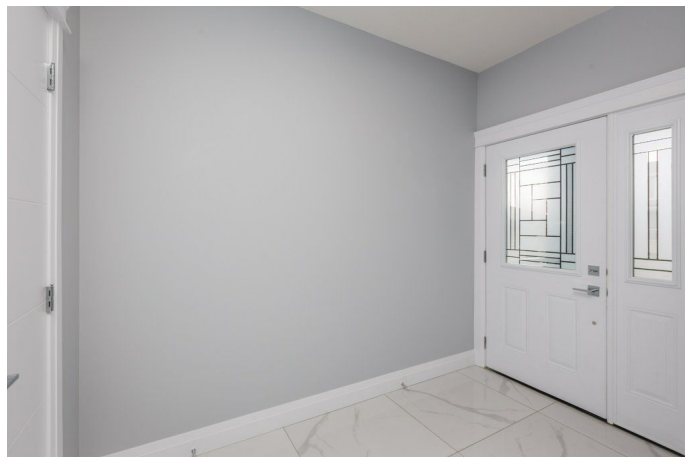
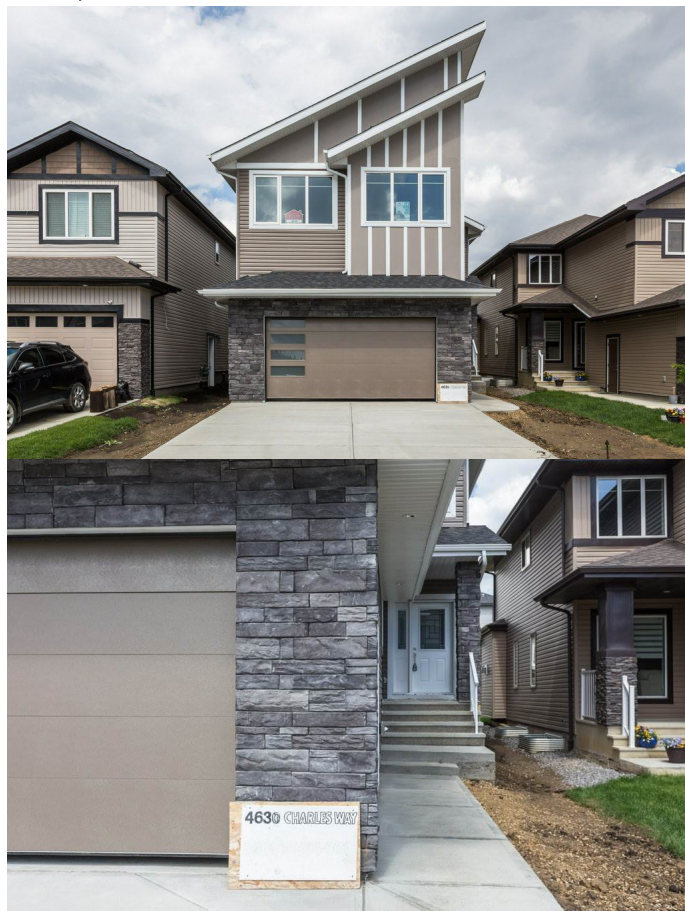
Chappelle Area, Edmonton, AB

Designed for generous space and flexibility for your furnishings! BRAND NEW Custom Built 2 Storey in Chappelle boasts 2610 sqft, 4 bdrms + den, 4 full baths & double attached garage. Gleaming tile floors welcome you in the spacious entrance. Continue through to the exquisite CUSTOM KITCHEN featuring quartz countertops, stunning tile work and light fixtures, large island and walk through pantry. The open concept floor plan gives direct access to the dining area & large living room with tile faced modern fireplace. A 3 pce bath, bdrm/den & large custom mudroom complete this level. Upper level boasts a bright bonus room, spacious master w/5pce ensuite, 3 additional bedrooms with 3 pce jack and jill, and additional 5 pce bath. The unspoiled basement with SEPARATE ENTRANCE awaits your personal touch. Demand location makes "FAST" action a must!

Built in 2020

Essential Information

MLS® #	E4204206
Price	\$594,800
Bedrooms	4
Bathrooms	4.00
Full Baths	4
Square Footage	2,610



Acres	0.10
Year Built	2020
Type	Single Family
Sub-Type	Residential Detached Single Family
Style	2 Storey
Status	ACTIVE

Community Information

Address	4630 Charles Way Sw
Area	Edmonton
Subdivision	Chappelle Area
City	Edmonton
County	ALBERTA
Province	AB
Postal Code	T6W 3H1

Amenities

Features	Ceiling 10 ft., Closet Organizers, Deck, Detectors Smoke, No Animal Home, No Smoking Home, See Remarks
Parking Spaces	4
Parking	Double Garage Attached
# of Garages	2

Interior

Interior	Carpet, Ceramic Tile
Interior Features	Dishwasher-Built-In, Dryer, Garage Control, Garage Opener, Oven-Microwave, Refrigerator, Stove-Gas, Washer
Heating	Forced Air-1
Has Basement	Yes
Basement	Full, Unfinished
Fireplace	Yes
Fireplaces	Electric, Tile Surround
# of Stories	2

Exterior

Exterior	Stone, Vinyl
Exterior Features	Flat Site, No Back Lane, Playground Nearby, Public Transportation, Schools, Shopping Nearby, See Remarks
Roof	Asphalt Shingles

Construction	Wood Frame
Foundation	Concrete

School Information

Elementary	Donald R Getty
Middle	Donald R Getty
High	Lillian Osborne

Listing information last updated on August 14th, 2020 at 4:31am MDT